

November 5, 2024

Project No. 294-22

ADDENDUM NO. 4

This Addendum is being issued for the purpose of modifying and/or clarifying the original Bidding Documents dated September 26, 2024 and shall take precedence over them.

All work included herein shall be in accordance with the general requirements of the original bidding documents, except as specifically noted herein.

This Addendum is being sent to all known plan holders, suppliers, plan rooms, and governmental agencies having received Bidding Documents.

Supplemental Documents Issued:

Revised Drawing Sheet EP dated October 31, 2024
Wellhouse Plumbing Piping Schematic

- Item No. 1: Refer to Bidding Drawings C2 and C3 dated September 26, 2024: Note that 3" (minimum) SDR 11 HDPE piping is acceptable in lieu of 4" C900 DR8 PVC water pipe for from the point of new connection into the wellhouse. 3" SDR 11 HDPE is the minimum size. SDR 11 HDPE shall be equivalent in size to the piping encountered at the point of connection, but not less than 3" diameter.
- Item No. 2: Refer to Bidding Drawing C2 dated September 26, 2024: Bidders are to include a unit cost (per lineal foot) for investigation, removal and replacement of any existing compromised galvanized water main that may be found in the course of the Work. Investigation, removal and replacement with SDR 11 HDPE piping will be reviewed and approved by Change Order based upon the quantity encountered multiplied by the unit cost provided. Refer to Item 1 above. Provide separate unit costs for both 3" and 4" SDR 11 HDPE piping as both may be required.
- Item No. 3 Clarification – Voluntary Alternates: Bids submitted are to be based on the information contained in the Bidding Documents (Drawings and Specifications). Bidders wishing to propose alternate materials may offer Voluntary Alternates indicating the proposed voluntary alternate and any respective change in contract cost (add or deduct) for consideration by the Owner. Example: Bidders wishing to utilize copper process piping inside the well house in lieu of the specified Schedule 80 PVC may offer a Voluntary Alternate with the change in contract price associated with the voluntary alternate, however, the Bid submitted must be based on the Drawings and Specifications issued. Voluntary Alternates will not be considered in the determination of low Bidder, but will be considered following award of the contract.
- Item No. 4 Refer to Bidding Drawing C3 dated September 26, 2024 and to the Wellhouse Plumbing Piping Schematic issued with this Addendum. The Wellhouse Plumbing Piping Schematic is issued to clarify the plumbing piping layout within the Wellhouse.
- Item No. 5 Refer to Detail 3/M1.2 on Bidding Drawing C3 dated September 26, 2024: Note that Chemical Injection Taps are not required and may be omitted from the scope of work.

Anthony Esson, Architect
PO Box 479
Gaylord, Michigan 49734

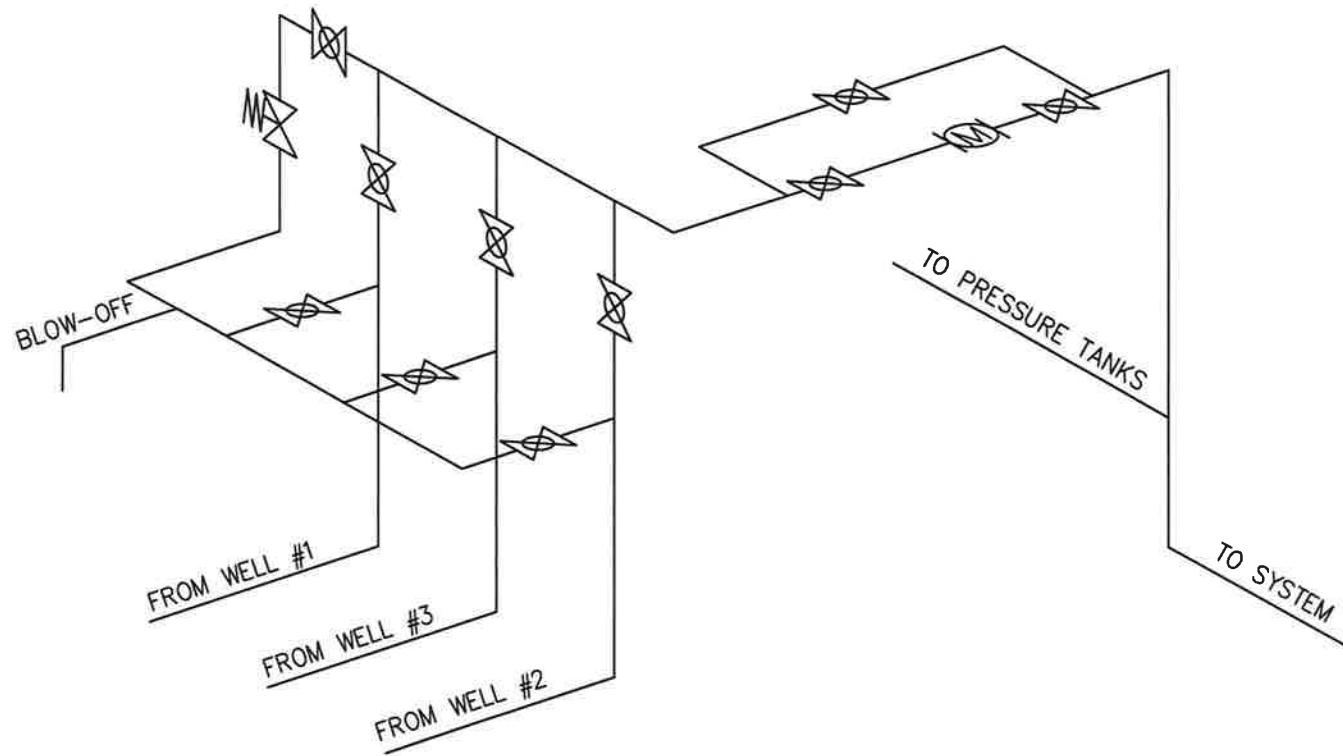
West Branch Rose City Area Schools
2022 Bond Issue – Bid Package No. 6 OHHS Well Upgrades
West Branch, Michigan

November 5, 2024




Project No. 294-22

- Item No. 6 Refer to Triplex Pump Controller Detail on Bidding Drawing C4 dated September 26, 2024: Where VFD's provide features that are indicated in the Bidding Documents, it is not the intent of the design to require duplicate functionality by other means (Triplex Controller). Where VFD's are designed and intended to be interconnected and to operate with similar functionality as the Triplex Controller indicated in the Bidding Documents, a Triplex Controller is not required. Where VFD's are provided that do not provide the functionality indicated in Bidding Documents, other features and functionality must be accommodated by other approved means (Triplex Controller).
- Item No. 7 Refer to Revised Drawing EP dated October 31, 2024 issued with this Addendum: Load Reactor/Filters are not required and have been deleted from the scope of work.
- Item No. 8 Refer to Bidding Drawings C4 dated September 26, 2024: Note that Flow switches as referenced in Well System Mechanical Equipment Schedule are not required and may be deleted from the scope of work.

End of Addendum



LEGEND

-  PLUG VALVE
-  PRESSURE RELIEF VALVE
-  FLOW METER